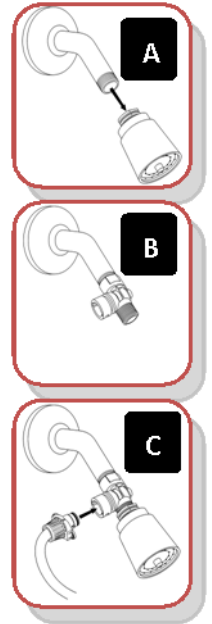


## Tub & Shower Baby & Toddler Rinser

### One-time Installation:

- (A) Remove your showerhead. Adjustable wrench or pliers may be needed to remove showerhead. To prevent scratching, always cover parts with a cloth before using a wrench or pliers.
- (B) Wrap pipe threads with the enclosed Teflon® tape. This produces a better seal and prevents possible leaking. Twist Rinse Ace® connector onto your shower pipe. Exposed threads will not affect the seal. The Rinse Ace® connector should twist on easily by hand. If you have difficulty, remove the connector, change the angle to align the threads and try again. **DO NOT FORCE THE CONNECTOR**-this could strip the connector threads. Hand-tighten only to prevent damaging the Rinse Ace® connector.
- Wrap the connector threads with the enclosed Teflon® tape. Reattach the showerhead-**DO NOT FORCE**. Exposed threads on the connector will not affect the seal. Hand-tightening is sufficient.



### To Use Sprayer:

- (C) Attach the hose by aligning the tabs on hose end with notches in valve opening. Push in and twist clockwise to lock. *Water will not come through the showerhead when the hose is attached.*
- Turn on water. Water will come out of the sprayer only when the blue toggle lever is in the UP position. Adjust water flow by moving the easy-glide lever. Move toggle lever to PAUSE when shampooing to save water, if desired. When water is turned on, never leave hose unattended. Always face sprayer away from your baby before checking water temperature on your hand and before spraying your baby or toddler.
- After drying your baby or toddler, turn on water to rinse the tub clean. Turn off water. Twist the hose counter-clockwise to unlock and pull straight out. Move blue lever UP on sprayer to drain remaining water from hose. Coil for easy storage with your other baby supplies.

Register your purchase at: [www.rinseace.com/service/product-registration/](http://www.rinseace.com/service/product-registration/)

Rinse Ace® Deluxe Tub & Shower Baby & Toddler Rinser makes bath time easier  
and more enjoyable for you and your child.

It's also great for washing your dog, cleaning the tub and shower, watering plants, cleaning large items and more!

### One Year Warranty

Idea Factory, Inc., warrants this product shall be free of defects in assembly under normal use when properly installed and maintained in accordance with instructions. This warranty does not include damage to the product resulting from misuse, product alteration or improper care and maintenance. This warranty gives you specific legal rights, and you may also have rights that vary from state to state.

If the product should become defective, Idea Factory, Inc., will repair it or elect to replace it free of charge. To obtain warranty service, e-mail [consumerassist@ideafactoryinc.com](mailto:consumerassist@ideafactoryinc.com) or call (800) 867-4673. You may be instructed to return defective product, postage prepaid, to:

Consumer Assistance • Idea Factory, Inc. • N56 W16865 Ridgewood Dr., Suite 200 • Menomonee Falls, WI 53051-5656

Include a return shipping address inside the package. Idea Factory, Inc., will return your product postage prepaid. Allow 2 weeks for delivery. Not responsible for illegible, lost or misdirected mail.

Claims of non-receipt will require you to provide a photocopy of substantiation of your shipment to Idea Factory, Inc.

Questions or comments? Call (800)867-4673 or (262)703-0011.  
Or visit [www.rinseace.com/product/tub-shower-baby-toddler-rinser/](http://www.rinseace.com/product/tub-shower-baby-toddler-rinser/)