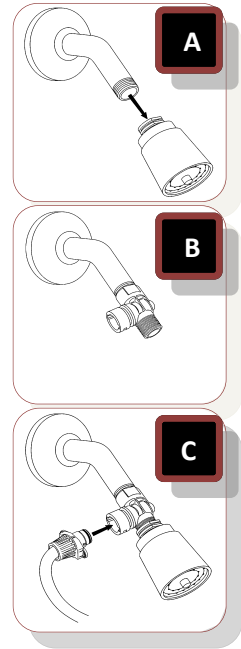


*ideal for anyone needing help bathing—  
whether temporary due to injury or permanent for seated bathing  
with or without a caregiver.*

### Shower Connector—One-time Installation:

1. (A) Remove your showerhead. Adjustable wrench or pliers may be needed to remove shower head. To prevent scratching, always cover parts with a cloth before using a wrench or pliers.
2. (B) Wrap pipe threads with the enclosed plumbers tape. This produces a better seal and prevents possible leaking. Twist Rinse Ace® Connector onto your shower pipe. Exposed threads will not affect the seal. The Rinse Ace® Connector should twist on easily by hand. If you have difficulty, remove the Connector, change the angle to align the threads and try again. **DO NOT FORCE THE RINSE ACE® CONNECTOR** this could strip the Connector threads. Hand-tighten only to prevent damaging the Connector.
3. Wrap the Rinse Ace® Connector threads with the enclosed plumbers tape. Reattach the showerhead - **DO NOT FORCE**. Exposed threads on the Rinse Ace® Connector will not affect the seal. Hand-tightening is sufficient.



### To Use 3-Setting Sprayer:

1. (C) Attach the hose by aligning the tabs on hose end with notches in valve opening. Push in and twist clockwise to lock. *Water will not come through the showerhead when the hose is attached.*
2. Turn on water. Water will come out of the sprayer only when the blue toggle lever is in the UP position. Adjust water flow by moving the easy-glide lever and turn the outer edge of the sprayface to select the desired setting for comfort. Move toggle lever to PAUSE when shampooing to save water, if desired. **WHEN WATER IS TURNED ON, NEVER LEAVE HOSE UNATTENDED.** Always face sprayer away from a person before checking water temperature on your hand and before spraying a person.
3. When bathing is complete, turn off water and store sprayer on enclosed Suction Mount Bracket. To use existing fixed showerhead, hose must be detached from Connector. Twist the hose counterclockwise to unlock and pull straight out. Move toggle lever to UP position to drain remaining water from hose if not storing on enclosed Suction Mount Bracket.

Register your purchase at <http://rinseace.com/registration>


Also, review your purchase at [http://www.rinseace.com/productreview?pr\\_page\\_id=1860](http://www.rinseace.com/productreview?pr_page_id=1860).

Your feedback will help others make an informed decision and help us improve our products.

Video at: <http://youtu.be/5VKRVUcYsh4>

### One Year Warranty:

Idea Factory, Inc. warrants this product shall be free of defects in assembly under normal use when properly installed and maintained in accordance with instructions. This warranty does not include damage to the product resulting from misuse, product alteration or improper care and maintenance. This warranty gives you specific legal rights, and you may also have rights that vary from state to state. If the product should become defective, Idea Factory, Inc. will repair it or elect to replace it free of charge. To obtain warranty service, email [consumerassist@ideafactoryinc.com](mailto:consumerassist@ideafactoryinc.com) or call (800) 867-4673. You may be instructed to return defective product, postage prepaid, to: Consumer Assistance • Idea Factory, Inc. • N56 W16865 Ridgewood Dr., Suite 200 • Menomonee Falls, WI 53051-5656 Include a return shipping address inside the package. Idea Factory, Inc., will return your product postage prepaid. Allow 2 weeks for delivery. Not responsible for illegible, lost or misdirected mail. Claims of non-receipt will require you to provide a photocopy of substantiation of your shipment to Idea Factory, Inc.

 Join our Facebook community. We'll keep you up to date on promotions and new products. Like your purchase? Share our page and products with your friends!

[www.facebook.com/RinseAce](http://www.facebook.com/RinseAce)

Questions or comments? Call 1-800-867-4673 or 262-703-0011.

Or visit <http://www.rinseace.com/product/assisted-bather>